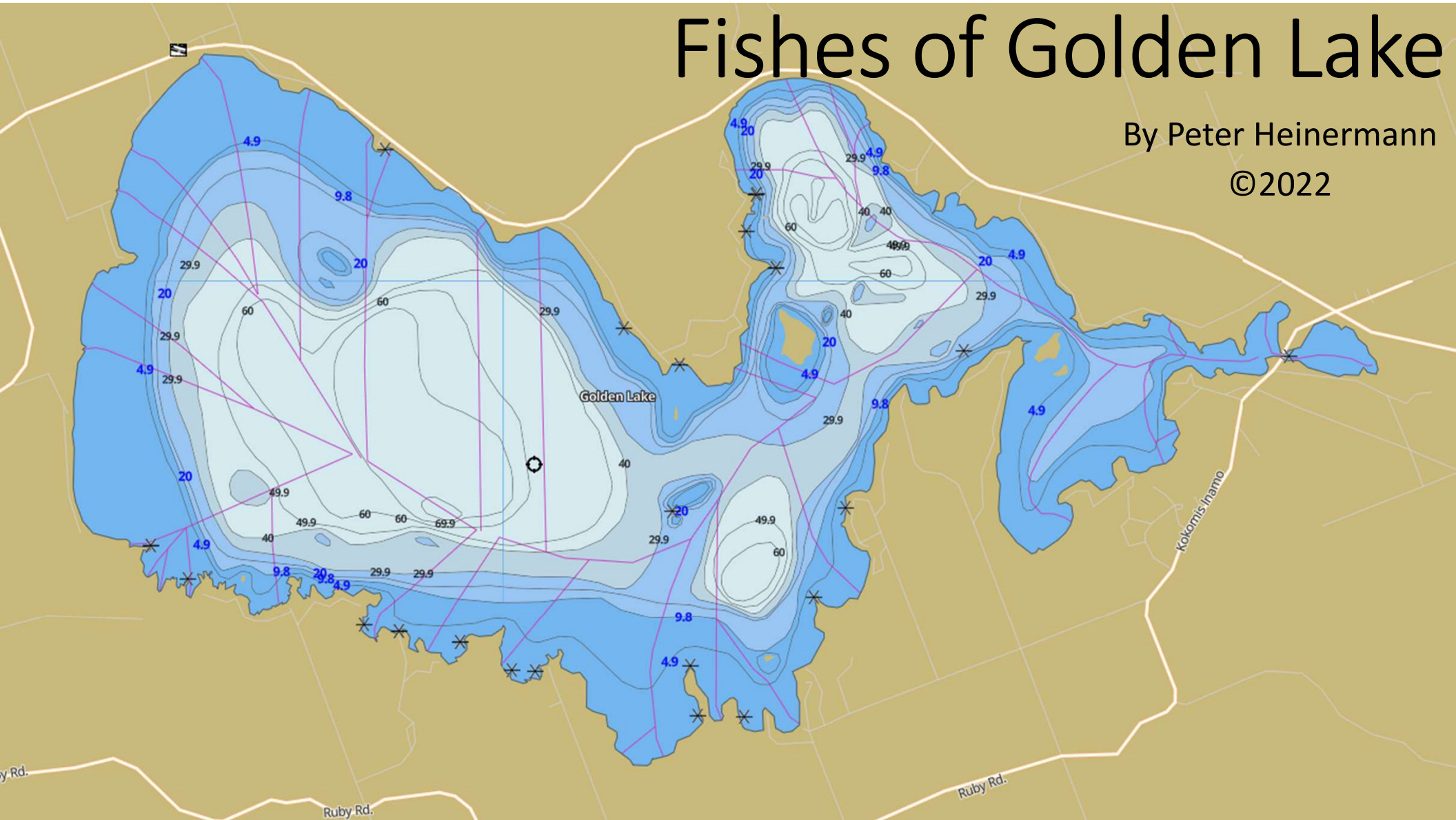


Fishes of Golden Lake

By Peter Heinermann

©2022







Black Crappie / Marigane noire (*Pomoxis nigromaculatus*)

Ontario Origin: native/introduced

Economic Importance: pan fish

Dist. Char: 7 to 8 dorsal fin spines

Diff. from similar species: White Crappie has 5 to 6 dorsal fin spines

Adult Length (cm TL): 17.8 - 35.2; **Ont. Rec.:** 43.2

Lifespan [Age of Maturity] (yrs): 8 - 13 [2 - 3]

Environment: benthopelagic

Habitat Preference: clear, quiet bays and shallower areas of larger lakes with abundant aquatic vegetation and mud or sand substrate

Preferred Temp. Range: 21-25°C

Diet: invertivore/carnivore

Reproduction: guarder, nest spawner, ariadnophil

Spawning: May to June, 14 -22°C



©A Touchon
[CC BY-NC 4.0](https://creativecommons.org/licenses/by-nc/4.0/)

Bluegill / Crapet arlequin (*Lepomis macrochirus*)

Ontario Origin: native

Economic Importance: pan fish

Dist. Char: Cheeks and gill covers are often bluish and the opercular flap is black. The posterior edge of the soft portion of the dorsal fin carries a dark blotch (spot).

Diff. from similar species: black/white/red opercular flap in Pumpkinseed and no black spot

Adult Length (cm TL): 13.7-25.3; **Ont. Rec.:** 28.2

Lifespan [Age of Maturity] (yrs): 8 - 11 [2-3 (m); 3-4 (f)]

Environment: benthopelagic

Habitat Preference: vegetated small lakes, shallow weedy bays of larger lakes

Preferred Temp. Range: 24-30°C

Diet: invertivore

Reproduction: guarder, nest spawner, polyphils

Spawning: (June to Aug., 19 -26°C)



Sen Traxion
[CC BY-NC 4.0](https://creativecommons.org/licenses/by-nc/4.0/)

Pumpkinseed / Crapet-soleil (*Lepomis gibbosus*)

Ontario Origin: native

Economic Importance: pan fish

Dist. Char: iridescent blue radiating lines on operculum, black/white/red on opercular flap

Diff. from similar species: no black spot on dorsal fin, Bluegill has a black opercular flap and black spot at the back of the dorsal fin

Adult Length (cm TL): 12.7-22.9; **Ont. Rec.:** 25.4

Lifespan [Age of Maturity] (yrs): 7 - 10 [2 - 3]

Environment: benthopelagic

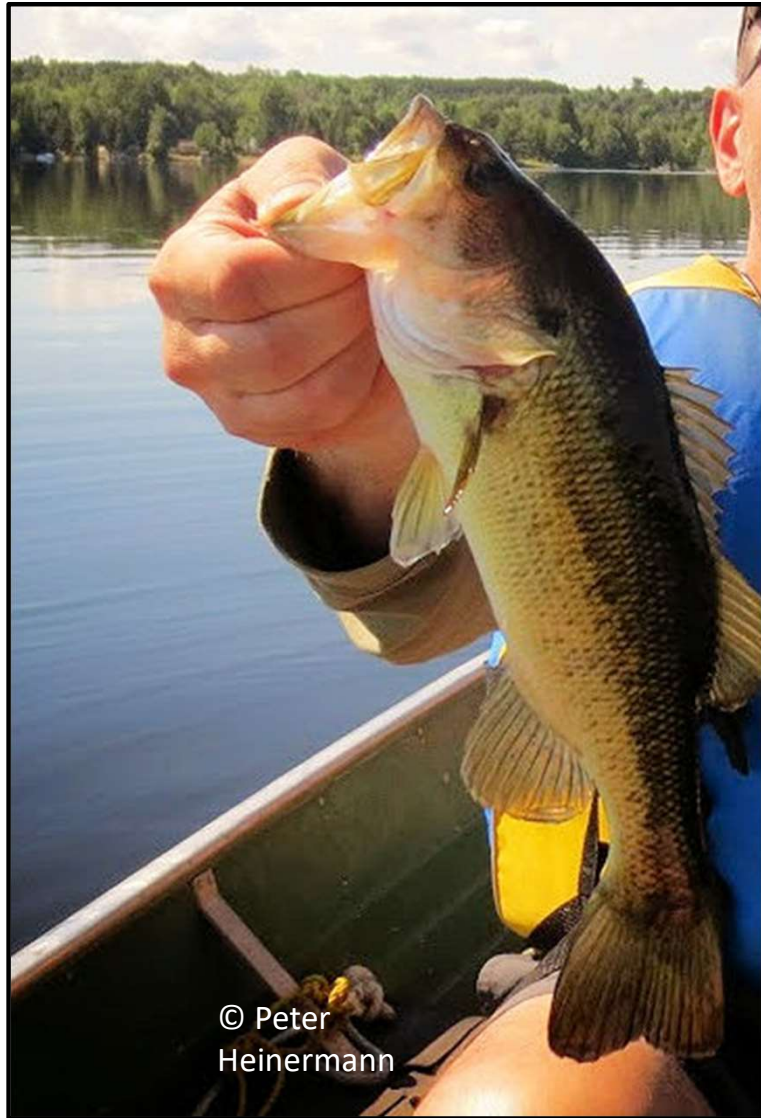
Habitat Preference: warm, shallows of lakes and ponds with aquatic vegetation and organic debris

Preferred Temp. Range: 22-30°C

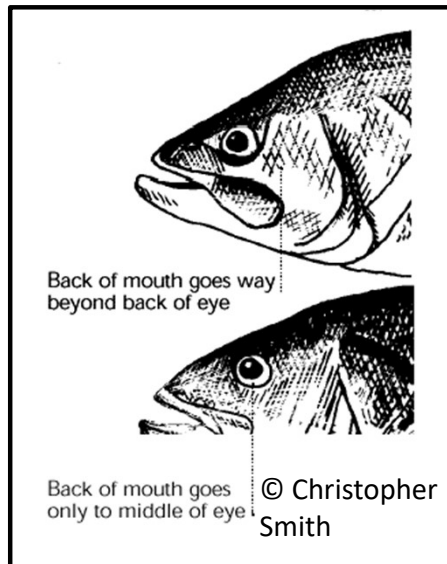
Diet: invertivore/carnivore

Reproduction: guarder, nest spawner, polyphils

Spawning: (May to Aug., 17 -26°C)



© Peter
Heinermann



Largemouth Bass / Achigan à grande bouche (*Micropterus salmoides*)

Ontario Origin: native/introduced

Economic Importance: sport fish

Dist. Char: a broad stripe running horizontally on body, posterior edge of maxilla extends at least to posterior edge of eye

Diff. from similar species: SB has no broad stripe and has lines running vertically on body; posterior edge of maxilla extends only to midpoint of eye in SB, LB's dorsal fin is almost 2 separate fins (spiny and soft), while a SB's is not divided

Adult Length (cm TL): 30.5-53.3; **Ont. Rec.:** 55.9

Lifespan [Age of Maturity] (yrs): 12 - 23 [3-4 (m); 4-5 (f)]

Environment: benthopelagic

Habitat Preference: clear, warm, shallow lakes, bays, ponds, marshes, often with soft mud or sand substrate and dense aquatic vegetation; usually at depths <6 m

Preferred Water Temp. Range: 26-30°C

Diet: invertivore/carnivore

Reproduction: guarder, nest spawner, polyphil

Spawning: (May to June., 15 -21°C)



Smallmouth Bass / Achigan à petite bouche (*Micropterus dolomieu*)

Ontario Origin: native/introduced

Economic Importance: sport fish

Dist. Char: has lines running vertically on body, posterior edge of maxilla extends to midpoint of eye, undivided dorsal fins

Diff. from similar species: LB has a broad stripe running horizontally and no vertical lines; posterior edge of maxilla extends at least to posterior edge of eye in LB, LB's dorsal fin is almost 2 separate fins (spiny and soft)

Adult Length (cm TL): 25.4-45.7 ; **Ont. Rec.:** 61.6

Lifespan [Age of Maturity] (yrs): 8 - 18 [3-4 (m); 4-5 (f)]

Environment: benthopelagic

Habitat Preference: clear, shallow (5-7 m), rocky and sandy areas of lakes

Preferred Water Temp. Range: 20-27°C

Diet: invertivore/carnivore

Reproduction: guarder, nest spawner, polyphil

Spawning: (May to June., 13 -20°C)

Rock Bass / Crapet de roche (*Ambloplites rupestris*)

Ontario Origin: native

Economic Importance: pan fish

Dist. Char: deep-bodied fish, red eyes, six anal fin spines, spiny and soft dorsal fins are connected, adults have regular rows of black spots along the side

Diff. from similar species: RB has six anal fin spines vs 3 anal fin spines in SB, LB, Pumpkinseed and Bluegill

Adult Length (cm TL): 15.2-26.7; **Ont. Rec.:** 29.2

Lifespan [Age of Maturity] (yrs): 8 - 13 [3 - 5]

Environment: benthopelagic

Habitat Preference: rocky or vegetated shallows of lakes; reported to depths of 21 m

Preferred Water Temp. Range: 21-26°C

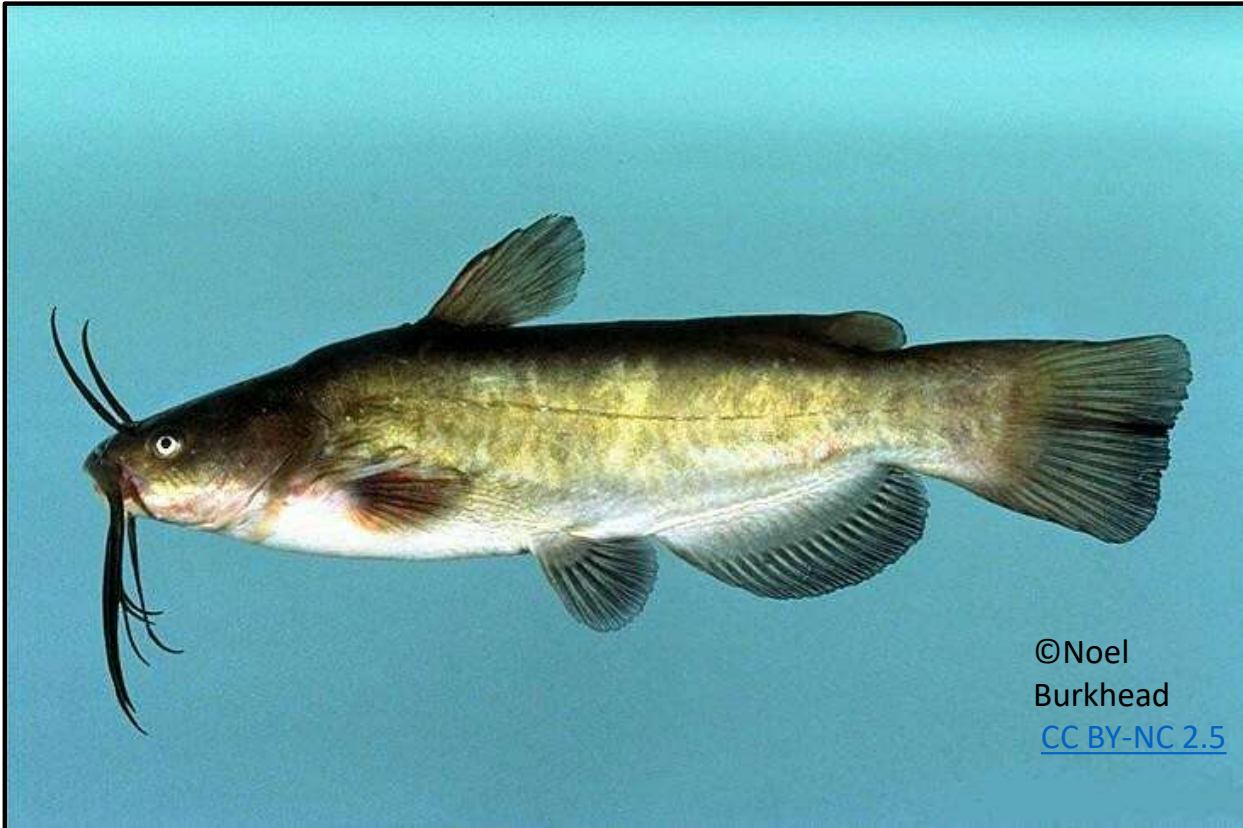
Diet: invertivore/carnivore

Reproduction: guarder, nest spawner, polyphil

Spawning: (May to June., 18 -23°C)



Brown Bullhead / Barbotte brune (*Ameiurus nebulosus*)



Ontario Origin: native

Economic Importance: commercial fishery

Dist. Char: Scaleless, spines leading pectoral and dorsal fins, squared-off, slightly notched caudal fin and 4 pairs of dusky to black barbels surrounding mouth, adipose fin present

Diff. from similar species: Yellow Bullhead has a squared - off, slightly rounded caudal fin and yellow to white chin barbels

Adult Length (cm TL): 19.3-35.6; **Ont. Rec.:** 44.6

Lifespan [Age of Maturity] (yrs): 8 - 12 [2 - 3]

Environment: benthic

Habitat Preference: sand to mud substrates in impoundments, ponds and lake embayments

Preferred Water Temp. Range: 25-31°C

Diet: invertivore/herbivore/carnivore

Reproduction: guarder, nest spawner, speleophil

Spawning: (May to June., 14 -25°C)

Yellow Bullhead / Barbotte jaune (*Ameiurus natis*)



©Adam Cohen
[CC BY-NC 4.0](https://creativecommons.org/licenses/by-nc/4.0/)

Ontario Origin: native

Economic Importance: none

Dist. Char: Scaleless, spines leading pectoral and dorsal fins, has a squared - off, slightly rounded caudal fin and 2 pairs of yellow to white barbels on lower jaw and 2 other pairs of darker barbels, adipose fin present

Diff. from similar species: Brown Bullheads have all black barbels

Adult Length (cm TL): 17.8-34.3 ; **Ont. Rec.:** 36.8

Lifespan [Age of Maturity] (yrs): 6 - 12 [2 - 3]

Environment: benthic

Habitat Preference: heavily vegetated areas of shallow bays and small lakes

Preferred Water Temp. Range: 27-29°C

Diet: invertivore/carnivore

Reproduction: guarder, nest spawner, speleophil

Spawning: (May to June., 16 -25°C)

Burbotte (Ling) / Lotte (*Lota lota*)



Ontario Origin: native

Economic Importance: sport fish

Dist. Char: single barbel on chin, long dorsal and anal fins, very small scales

Diff. from similar species: catfish have many barbels on chin

Adult Length (cm TL): 38.1-83.8; **Ont. Rec.:** 99.1

Lifespan [Age of Maturity] (yrs): 10 - 20 [3-7 (m); 4-8 (f)]

Environment: benthic

Habitat Preference: moderate to deep waters (to 90 m) of lakes

Preferred Water Temp. Range: 7-18°C

Diet: invertivore/carnivore

Reproduction: nonguarder, open substratum spawners, litho-pelagophil

Spawning: (Jan. to March, 1 - 4°C)

Cisco (Lake Herring) /
Cisco de lac
(*Coregonus artedii*)



© Peter
Jacobson

Ontario Origin: native

Economic Importance: forage fish; bait fish; commercial fishery; sport fish

Dist. Char: silvery, herring-like, no teeth, adipose fin, lower jaw extends just beyond the tip of snout

Diff. from similar species: The Lake Whitefish has a snout that overhangs the lower jaw.

Adult Length (cm TL): 22.1-37.6; **Ont. Rec.:** 59.7

Lifespan [Age of Maturity] (yrs): 14 - 22 [2 - 4]

Environment: pelagic

Habitat Preference: open, mid-waters (13-53 m) of lakes, below the thermocline

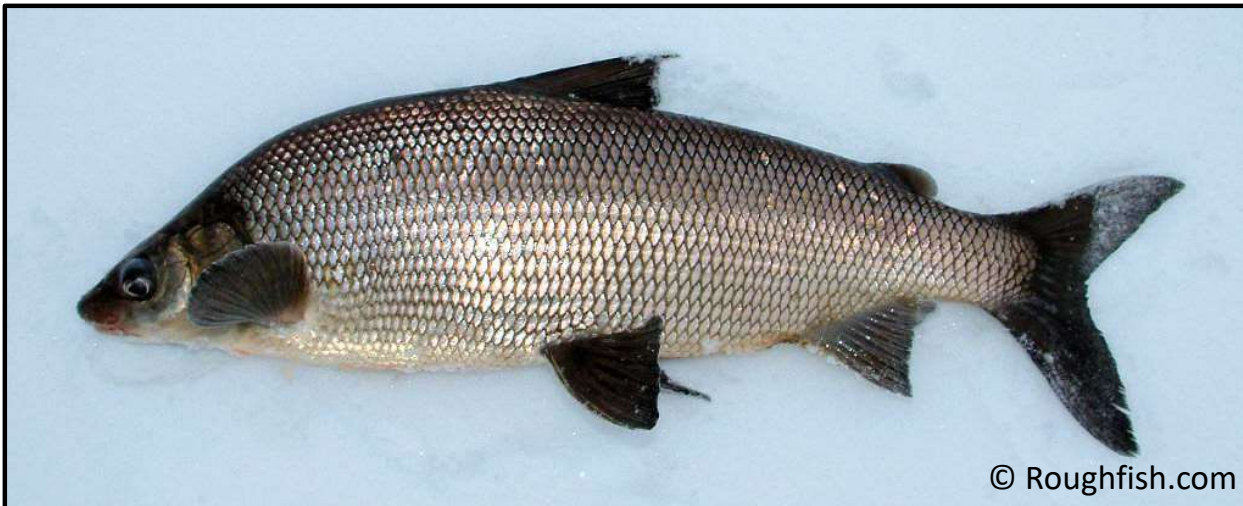
Preferred Water Temp. Range: 7-10°C

Diet: planktivore/invertivore

Reproduction: nonguarder, open substratum spawners, pelagophil

Spawning: (Nov. to Dec., 1 - 4°C)

Lake Whitefish/
Grand corégone
(*Coregonus clupeaformis*)



Ontario Origin: native

Economic Importance: commercial fishery; sport fish

Dist. Char: silvery, herring-like, small teeth, adipose fin, snout overhangs the lower jaw

Diff. from similar species: the lower jaw of the Cisco extends up to or beyond the tip of snout.

Adult Length (cm TL): 38.1-74.9; **Ont. Rec.:** 74.9

Lifespan [Age of Maturity] (yrs): 12 – 28 [4 - 7]

Environment: benthic

Habitat Preference: cool waters (18-37 m) of lakes, below the thermocline

Preferred Water Temp. Range: 7-10°C

Diet: invertivore/carnivore

Reproduction: nonguarder, open substratum spawner: litho-pelagophil

Spawning: (Oct. to Dec., 1 - 8°C)

Rainbow Smelt/ Éperlans arc-en-ciel (*Osmerus mordax*)



© Dexter
Nienhaus
[CC BY-NC 4.0](https://creativecommons.org/licenses/by-nc/4.0/)

Ontario Origin: native/introduced

Economic Importance: forage fish; commercial fishery; sport fish; invasive species

Dist. Char: streamlined, elongate body, olive green on the back, with purple, pink and blue iridescence on the sides and a silvery belly, large mouth with protruding lower jaw and large canine teeth on the roof of the mouth and the tongue, single soft dorsal fin and an adipose fin

Diff. from similar species: Minnows do not have an adipose fin or large teeth. Ciscoes and Lake Whitefish have deeper bodies and no teeth on the tongue and roof of mouth.

Adult Length (cm TL): 12.7-25.9; **Ont. Rec.:** 29.8

Lifespan [Age of Maturity] (yrs): 5 - 7 [2 - 3]

Environment: pelagic

Habitat Preference: cool, clear, mid-waters (14-64 m) of lakes

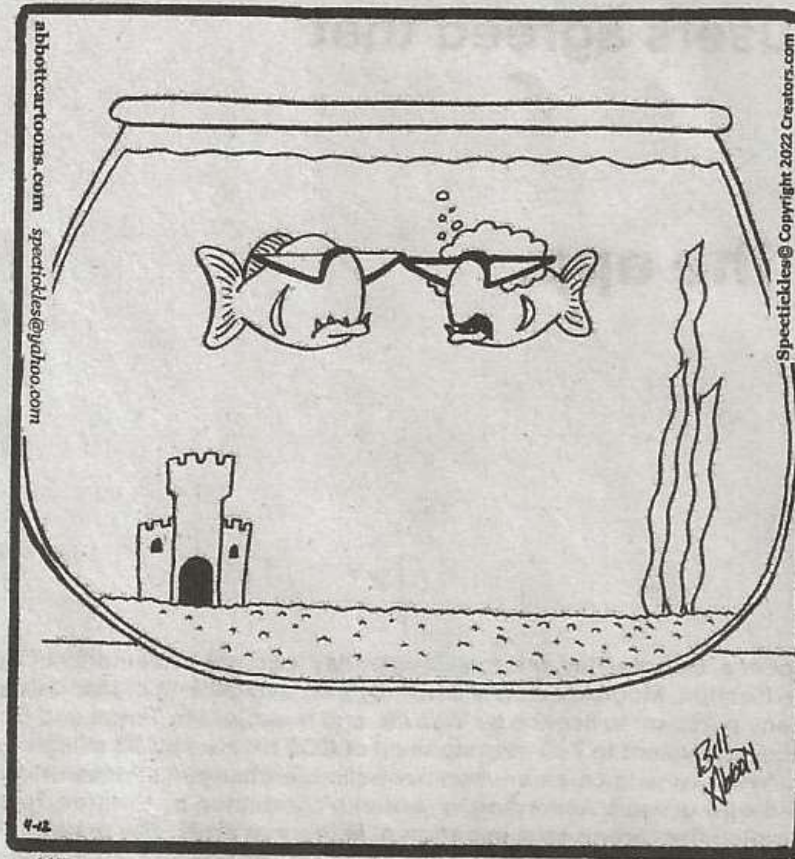
Preferred Water Temp. Range: 7-16°C

Diet: invertivore/carnivore

Reproduction: nonguarder, open substratum spawner: litho-pelagophil

Spawning: (March to April, 4.5 -11°C)

SPECTICKLES



“I guess we could probably downsize now that you’ve eaten all the kids.”

Lake Trout / Touladi

(*Salvelinus namaycush*)



Ontario Origin: native/introduced

Economic Importance: commercial fishery; sport fish

Dist. Char: bright-gray, often olive shading to silvery white on the belly, covered with large light-colored spots, tail is deeply forked and adipose fin present

Diff. from similar species: no similar species in Golden Lake

Adult Length (cm TL): 38.1-91.4; **Ont. Rec.:** 130.8

Lifespan [Age of Maturity] (yrs): 15 – 30 [3-7 (m); 4-8 (f)]

Environment: benthopelagic

Habitat Preference: cold deeper waters (12-23 m) of lakes, below the thermocline in summer

Preferred Water Temp. Range: 9-13°C

Diet: invertivore/carnivore

Reproduction: nonguarder, brood hider: lithophil

Spawning: (Sept. to Nov., 9 - 14°C)

Bluntnose minnow /
Méné à museau arrondi
(*Pimephales notatus*)



© k_a_Christopher
[CC BY-NC 4.0](https://creativecommons.org/licenses/by-nc/4.0/)

Ontario Origin: native

Economic Importance: forage fish; bait fish

Dist. Char: a minnow with a blunt snout, an overhanging small mouth, and a conspicuous black spot on the caudal fin base, single dorsal fin

Diff. from similar species: no adipose fin, crowded scales between head and dorsal fin

Adult Length (cm TL): 5.4-8.5; **Ont. Rec.:** 10.1

Lifespan [Age of Maturity] (yrs): 3 - 5 [2-3 (m); 1-2 (f)]

Environment: benthopelagic

Habitat Preference: sand and gravel bottomed shallows of clear lakes and ponds

Preferred Water Temp. Range: 26-29°C

Diet: detritivore

Reproduction: guarder, nest spawner: speleophil

Spawning: (June to Aug., 19 -26°C)

Golden Shiner/ Méné jaune

(*Notemigonus crysoleucas*)



© backbaynwr
[CC BY-NC 4.0](https://creativecommons.org/licenses/by-nc/4.0/)

Ontario Origin: native

Economic Importance: forage fish; bait fish

Dist. Char: minnow with a small, upturned mouth, and a single dorsal fin, deep bodied but very thin, bronze to golden in colour

Diff. from similar species: no adipose fin, scaleless keel on belly from pelvic to anal fin, the lateral line curves downward, with its lowest point above the pelvic fins, no spot on caudal fin

Adult Length (cm TL): 10.2-17.8; **Ont. Rec.:** 23.0

Lifespan [Age of Maturity] (yrs): 5 - 8 [2 - 3]

Environment: benthopelagic

Habitat Preference: clear, weedy, quiet waters of lakes

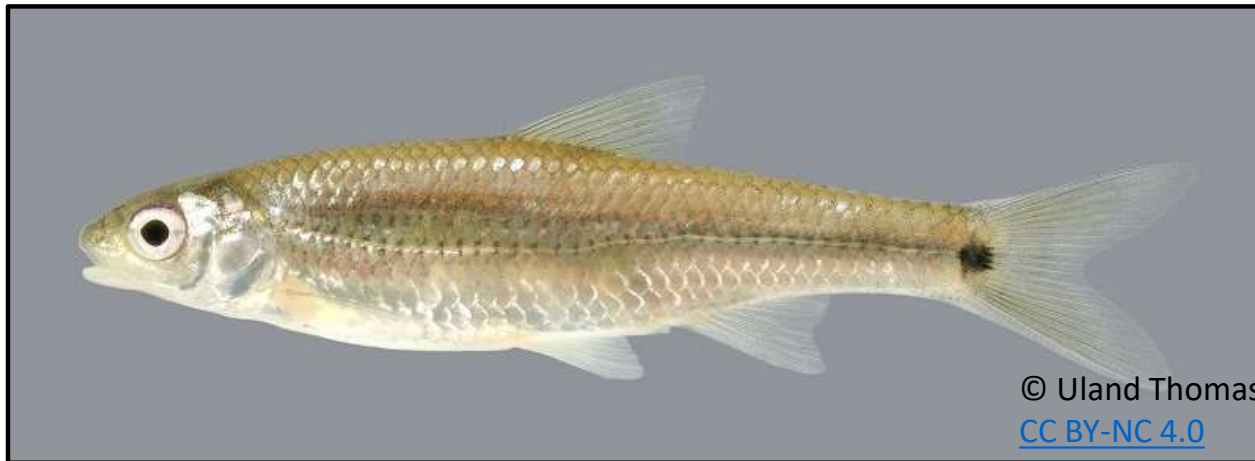
Preferred Water Temp. Range: 17-24°C

Diet: invertivore/herbivore

Reproduction: nonguarder, open substratum spawner: phytophil

Spawning: (June to Aug., 20 -27°C)

Spottail Shiner/
Méné à tache noire
(*Notropis hudsonius*)



Ontario Origin: native

Economic Importance: forage fish; bait fish

Dist. Char: minnow with a rounded snout overhanging mouth, no barbel, black spot found at the base of the caudal fin, single dorsal fin

Diff. from similar species: rounded snout, scales on belly

Adult Length (cm TL): 5.8-12.7; **Ont. Rec.:** 14.2

Lifespan [Age of Maturity] (yrs): 3 - 5 [1 - 2]

Environment: benthopelagic

Habitat Preference: lakes with slow to moderate current and sand, gravel, mud or silt substrates

Preferred Water Temp. Range: 13-22°C

Diet: invertivore/herbivore

Reproduction: nonguarder, open substratum spawner: litho-pelagophil

Spawning: (May to June., 15 -22°C)

White Sucker / Meunier noir (*Catostomus commersonii*)



Ontario Origin: native

Economic Importance: forage fish; bait fish; coarse fish

Dist. Char: snout rounded; inferior mouth is round and rimmed with thick lips, and overhung by snout; lower lip 2X wider than upper lip

Diff. from similar species: differs from minnows because of its sucker-like inferior mouth, no adipose fin

Adult Length (cm TL): 25.4-50.8; **Ont. Rec.:** 57.9

Lifespan [Age of Maturity] (yrs): 15 - 25 [2-3 (m); 3-4 (f)]

Environment: benthic

Habitat Preference: warm shallow lakes and embayments of larger lakes, usually at depths of 6-9 m

Preferred Water Temp. Range: 17-24°C

Diet: invertivore/detritivore

Reproduction: nonguarder, open substratum spawner: litho-pelagophil

Spawning: (April to June, 10 -20°C)

Muskellunge / Maskinongé

(*Esox masquinongy*)



© Peter
Heinermann

Ontario Origin: native

Economic Importance: sport fish; commercial fishery (historical)

Dist. Char: duckbill-like snout, dorsal and anal fins far back on long, cylindrical body, large canine teeth, pointed pectoral, pelvic and caudal fins, 6-9 pores on underside of lower jaw, vertical dark markings on a silvery green to brown background

Diff. from similar species: Northern Pike have rounded pectoral, pelvic and caudal fins, light horizontal spots on a darker background, and 5 or less pores on lower jaw

Adult Length (cm TL): 71.1-121.9; **Ont. Rec.:** 157.5

Lifespan [Age of Maturity] (yrs): 15 - 30 [3-6 (m); 4-8 (f)]

Environment: benthopelagic

Habitat Preference: clear, cool to warm waters of medium to large lakes and slow rivers

Preferred Water Temp. Range: 22-26°C

Diet: carnivore

Reproduction: nonguarder, open substratum
spawner: phytophil

Spawning: (April to May, 9 -16°C)

Northern Pike / Grand brochet (*Esox lucius*)



Ontario Origin: native

Economic Importance: sport fish; commercial fishery (historical)

Dist. Char: duckbill-like snout, dorsal and anal fins far back on long, cylindrical body, large canine teeth, rounded pectoral, pelvic and caudal fins, 5 or less pores on underside of lower jaw, light horizontal spots on a darker background

Diff. from similar species: Muskie have pointed pectoral, pelvic and caudal fins, 6-9 pores on underside of lower jaw and vertical dark markings on a silvery green to brown background

Adult Length (cm TL): 45.7-100.2; **Ont. Rec.:** 134.6

Lifespan [Age of Maturity] (yrs): 10 - 26 [2-3 (m); 3-4 (f)]

Environment: benthopelagic

Habitat Preference: clear, cool to warm, weedy bays of lakes and slow heavily vegetated rivers

Preferred Water Temp. Range: 17-24°C

Diet: carnivore

Reproduction: nonguarder, open substratum
spawner: phytophil

Spawning: (March to May, 4 -11°C)

Trout-perch / Omisco (*Percopsis omiscomaycus*)



© Michael
Verdirame
[CC BY-NC 4.0](https://creativecommons.org/licenses/by-nc/4.0/)

Ontario Origin: native

Economic Importance: forage fish; bait fish (incidental)

Dist. Char: large, unscaled head, has an adipose fin, colour is transparent yellow olive with silver flecks above, and rows of dusky spots along the back and the sides, dorsal, anal and pelvic fins are preceded by 0-4 spines that, when present, may be quite soft

Diff. from similar species: differs from minnows by the presence of an adipose fin

Adult Length (cm TL): 6.4-11.4; **Ont. Rec.:** 15.0

Lifespan [Age of Maturity] (yrs): 3-4 (m); 4-8 (f) [1-2 (m); 2-3 (f)]

Environment: benthopelagic

Habitat Preference: deeper waters (9-13 m) of lakes, usually over sand or gravel bottoms

Preferred Water Temp. Range: 10-16°C

Diet: invertivore/carnivore

Reproduction: nonguarder, open substratum spawner: lithophil

Spawning: (May to Aug., 10 -17°C)

Walleye (Yellow Pickerel)/ Doré jaune (*Sander vitreus*)



Ontario Origin: native

Economic Importance: commercial fishery; sport fish

Dist. Char: anal fin with 2 spines and 12 or 13 soft rays; canine teeth present, usually 2 on tip of lower jaw and a large black blotch at the posterior base of spiny dorsal in adults

Diff. from similar species: perch-like but without the vertical dark bars on sides, Yellow Perch also only have an anal fin with 2 spines and 6-8 soft rays

Adult Length (cm TL): 30.5-76.2; **Ont. Rec.:** 94.0

Lifespan [Age of Maturity] (yrs): 12 - 36 [3-4 (m); 4-5 (f)]

Environment: benthopelagic

Habitat Preference: lakes (at depths up to 21 m)

Preferred Water Temp. Range: 19-23°C

Diet: invertivore/carnivore

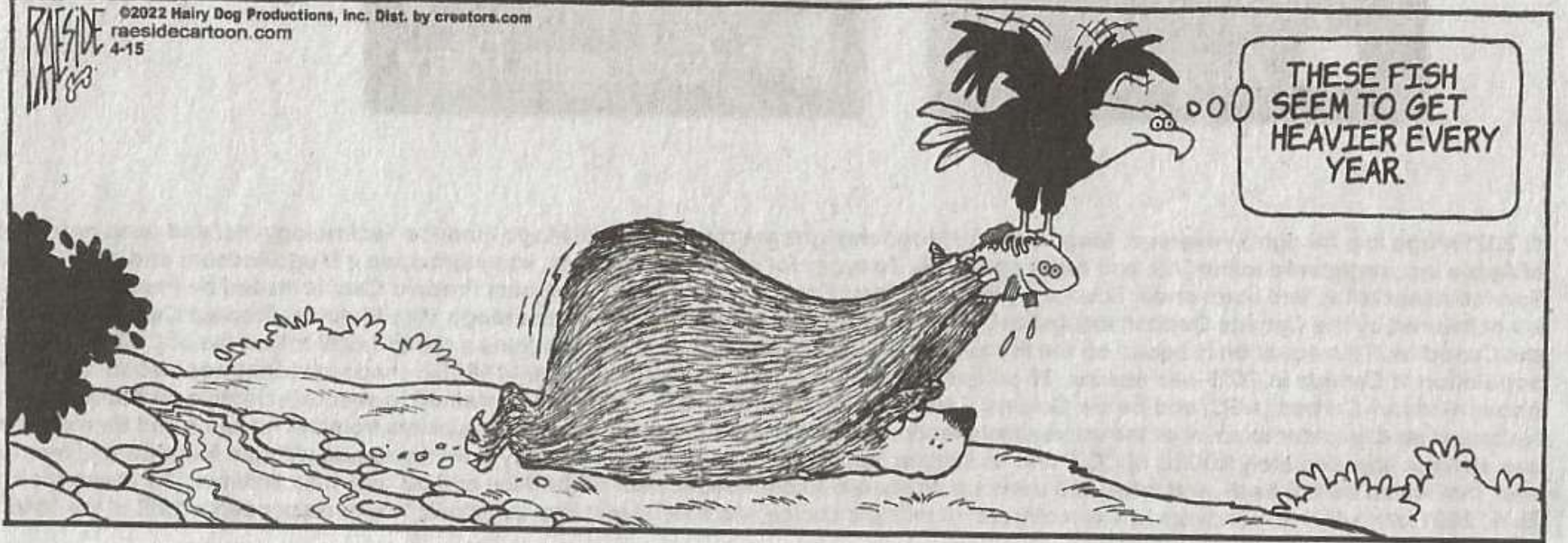
Reproduction: nonguarder, open substratum
spawner: litho-pelagophil

Spawning: (April to June, 4 -11°C)

THE OTHER COAST

RAESIDE
4-15

©2022 Hairy Dog Productions, Inc. Dist. by creators.com
raesidecartoon.com
4-15



Yellow Perch/ Perchaude

(*Perca flavescens*)



Ontario Origin: native

Economic Importance: forage fish; commercial fishery; pan fish

Dist. Char: anal fin with 2 spines and 6-8 soft rays, no canine teeth on lower jaw, sides of body yellow to yellow-green with 6-8 wide, dark, vertical bars, two well separated dorsal fins

Diff. from similar species: Walleye have no vertical dark bars and an anal fin with 2 spines and 12-13 soft rays

Adult Length (cm TL): 11.4-30.5; **Ont. Rec.:** 40.0

Lifespan [Age of Maturity] (yrs): 7 - 12 [2-3 (m); 3-4 (f)]

Environment: benthopelagic

Habitat Preference: lakes and ponds with moderate aquatic vegetation and clear water, usually at depths <9 m

Preferred Water Temp. Range: 18-24°C

Diet: invertivore/carnivore

Reproduction: nonguarder, open substratum spawner: phyto-lithophil

Spawning: (April to May, 6 -12°C)

Logperch/ Fouille-roche zébré (*Percina caprodes*)



© Noel Burkhead
[CC BY-NC 2.5](https://creativecommons.org/licenses/by-nc/2.5/)

Ontario Origin: native

Economic Importance: forage fish; bait fish (occasional)

Dist. Char: slender elongate body, dusky tear drop, mouth is overhung by a distinctly conical snout, body is yellowish green with dark olive or black vertical bars, 1st dorsal fin is spiny and 2nd dorsal is soft-rayed, a small black spot is present at the base of the caudal fin

Diff. from similar species: many alternating long and short bars along side, spot at base of caudal fin

Adult Length (cm TL): 7.6-14.7; **Ont. Rec.:** 18.0

Lifespan [Age of Maturity] (yrs): 3 - 4 [1 - 2]

Environment: benthic

Habitat Preference: sand, gravel or rocky beaches in lakes

Preferred Water Temp. Range: 18-24°C

Diet: invertivore

Reproduction: nonguarder, brood hider: lithophil

Spawning: (May to June., 10 -18°C)

Improper Catch and Release Technique



Mike the Pike says... Remember to practice fish CPR.....Catch.....Photo.....Release!

